

TECHNICAL SALES BULLETIN 019

25th January 2019

WALK ON GLASS HUMAN LOADS ONLY

Info Required For Walk On Glass

Due to the long term loads and different building classifications a range of values are required before any calculation can be done.

1. Building classification (See below for more info)
2. Panel size to be calculated (*all four edges supported*)
3. Structure to be detailed and approved by other (*Competent Person Structures*)
4. Duration of the load that will be applied (Days, Weeks, Months, 1 year +)
5. Is a Non Slip coating required?



Loads & Duration Factors

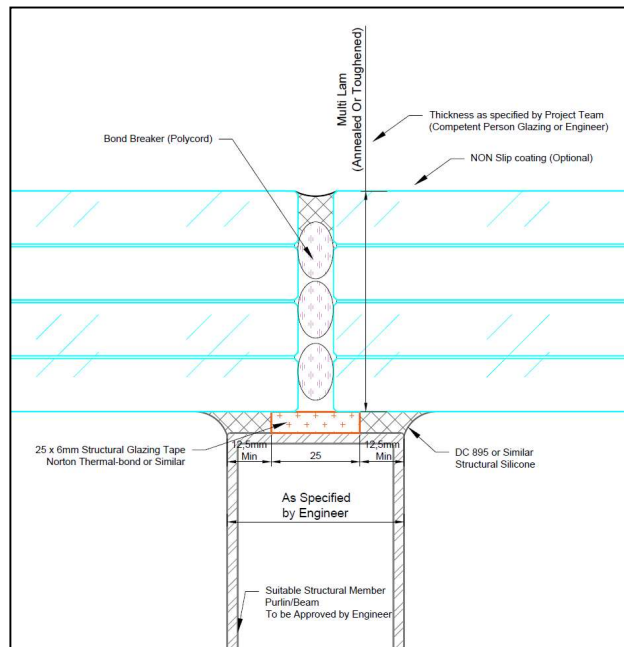
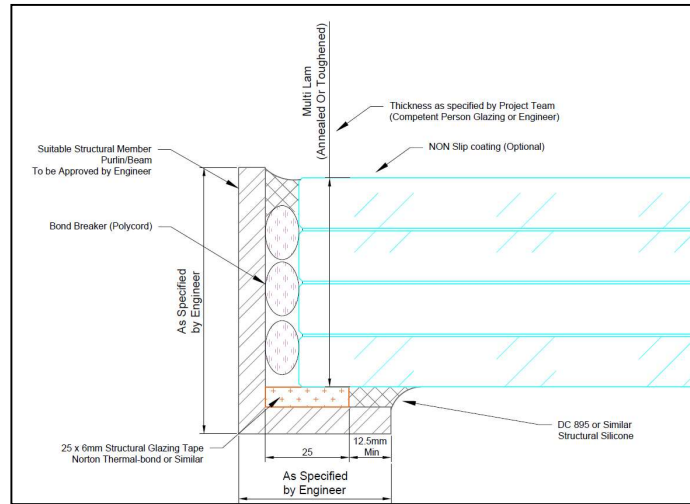
Dependent on the Building classification a specific set of loads can be used in the calculations (*To be supplied by the architect/professional team in writing*)

Below is a list of building classifications used typically.

Cat	Sub Cat	Description
Residential	A1	Houses
	A2	Hospitals/Schools/Hotels
	A3	Stairs
	A4	Balconies
Public	B1	Offices
	B2	Libraries
	B3	Kitchens Bathrooms toilets
	B4	X-Ray Rooms/Operating
Shopping	D	Shopping Centres

Typical Floor Detail

Below are some typical details available. The detail is to be used as a guide and a full detail is to be supplied by Project Engineer (*Competent Person - Structures*)



Mike Pote
Competent Person (Glazing)
PG Building Glass
011 417-5800
073 131-4567
mpote@pg.co.za

Clive Engelbrecht
MSAGI - 2
PG Building Glass
011 417-5800
082 081-3071
cengelbrecht@pg.co.za